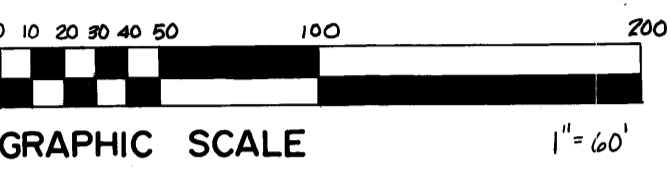


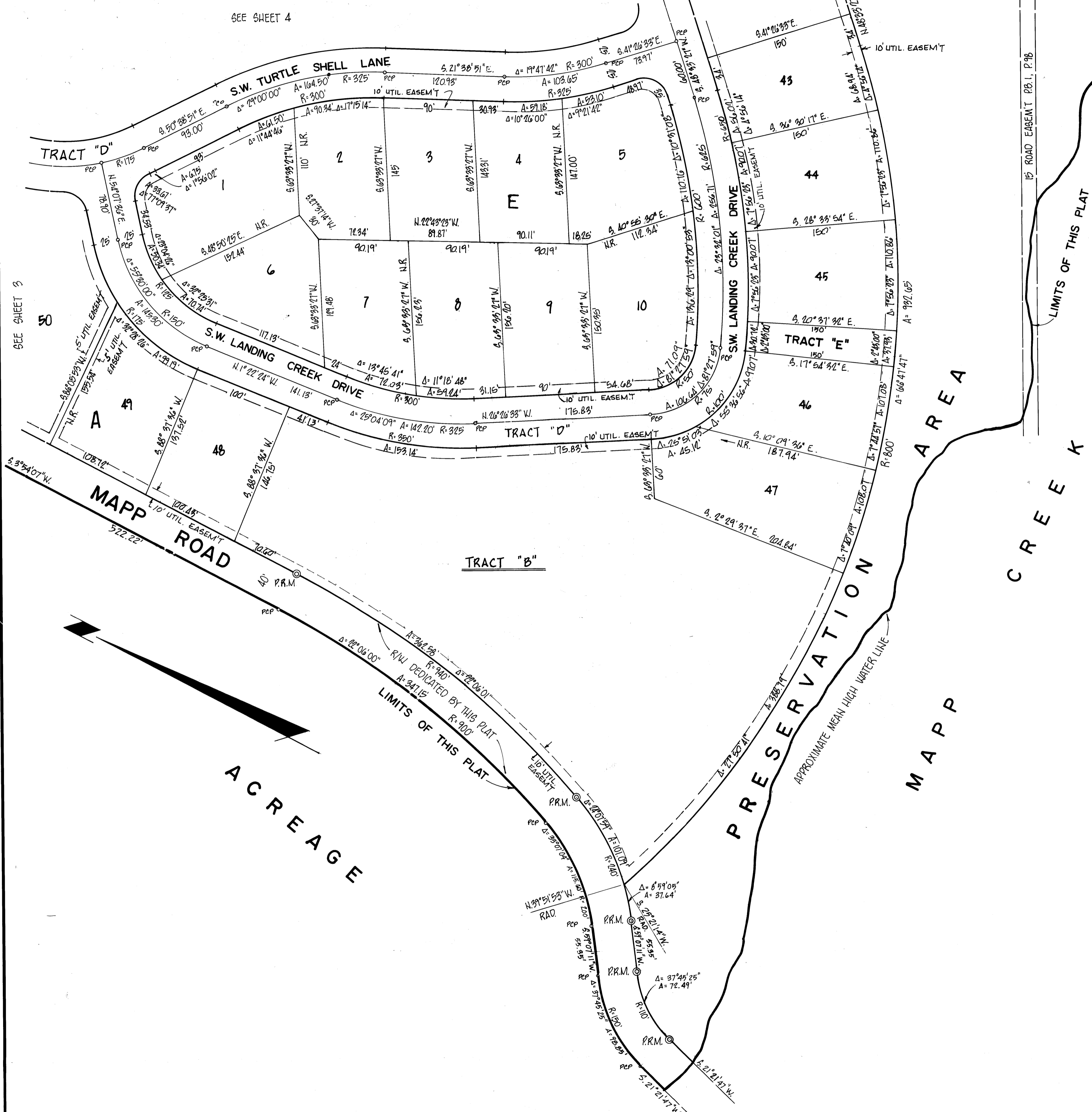
CLERK'S RECORDING CERTIFICATE
 I, LOUISE V. ISAACS, CLERK OF THE CIRCUIT COURT OF MARTIN COUNTY, FLORIDA, HEREBY CERTIFY THAT THIS PLAT WAS FILED FOR RECORD IN PLAT BOOK 10, PAGE 25, MARTIN COUNTY, FLORIDA, PUBLIC RECORDS THIS _____ DAY OF _____, 198____.
 LOUISE V. ISAACS, CLERK
 CIRCUIT COURT
 MARTIN COUNTY, FLORIDA.
 FILE NO _____ BY: _____
 DEPUTY CLERK

SHEET 5 OF 5



- LEGEND**
- DENOTES (P.C.P.) PERMANENT CONTROL POINT
 - ⊙ DENOTES (P.R.M.) PERMANENT REFERENCE MONUMENT
 - N.R. INDICATES NON-RADIAL
- NOTES**
- (1) ALL RADII 25' UNLESS OTHERWISE NOTED.
 - (2) BEARINGS AS SHOWN HERE ON ARE REFERENCED TO THE EAST LINE OF THE WEST 251 ACRES OF SAID LOT 8 BEARING S. 24° 18' 35" E. AS SHOWN ON THE PLAT OF FOUR RIVERS (5-6)
 - (3) DIMENSIONS AT BLOCK CORNERS ARE TO PROPERTY LINES EXTENDED, EXCEPT WHERE OTHERWISE NOTED.
 - (4) BENCH MARK: SQUARE CUT ON WING WALL AT NORTH EAST CORNER OF MAPP ROAD BRIDGE, OVER MAPP CREEK; ELEV. + 6.72' H.G.V.D.

RIVER LANDING



DENI ASSOCIATES
 4700 HIATUS RD., SUITE 351
 SUNRISE, FL. 33321
 (305) 749-0993